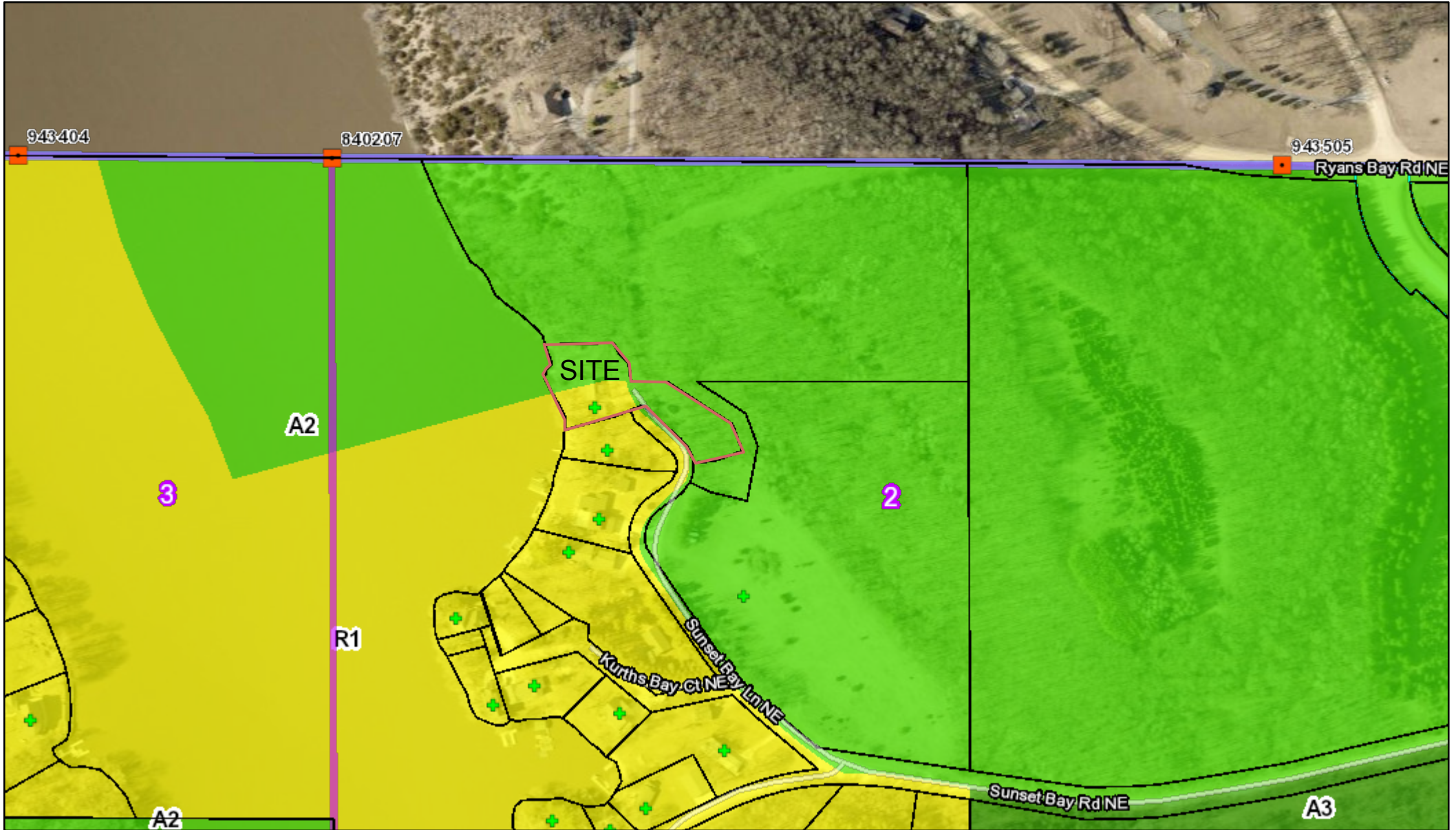


Zoning Map



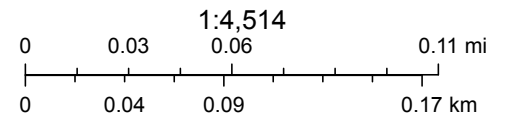
12/12/2022, 4:19:31 PM

Centerlines

— <all other values>

— City Street

— County Road



Olmsted County, MN GIS Division and Olmsted County, MN Property Records and Licensing., Sources: Esri, HERE, Garmin, Intermap, increment P Corp., GEBCO, USGS, FAO, NPS, NRCAN, GeoBase, IGN, Kadaster NL, Ordnance Survey, Esri Japan, METI, Esri China (Hong Kong), (c) OpenStreetMap

Web AppBuilder for ArcGIS

Olmsted County, MN is not responsible for errors or omissions contained herein. If errors or discrepancies are found, please contact Olmsted County Planning Dept. at 507-328-7100.