



507.634.4505 ■ WSE.ENGINEERING

June 5, 2024

Oronoco Town Board

c/o Jered Staton

Zoning Administrator

4111 11th Avenue SW

Rochester, Minnesota 55902

Dear Board Members and Mr. Staton:

This letter, drafted on behalf of Robert Boelter, and shall serve as a formal petition to Rochester Town Board in support of a land use amendment to change the land use from Resource Protection to Suburban Subdivision on lands owned by Robert Boelter in Section 34, Oronoco Township.

Attached to this letter is **Exhibit A** which is a vicinity map of the Boelter Land and surrounding suburban development. The legal description and acreage are attached as **Exhibit B**. The request to change the land use is necessary to allow for construction of a home on parcel #048378 and change the land use of the Boelter homestead within parcel # 040097.

A letter of support of the land use change by the township is the first step in the process of obtaining approval of a land use amendment by Olmsted County.

The request to change the land use to suburban subdivision on the Boelter property is consistent with the surrounding suburban subdivision land use.

We respectfully request to be on the agenda of Oronoco Township Board as soon as possible.

Thank you for your consideration.

WSE Massey Engineering

A handwritten signature in blue ink that reads 'William E. Tointon'.

William E. Tointon

Director of Land Development

Cc Robert Boelter

Parcel Boundary
 Parcels (2023)

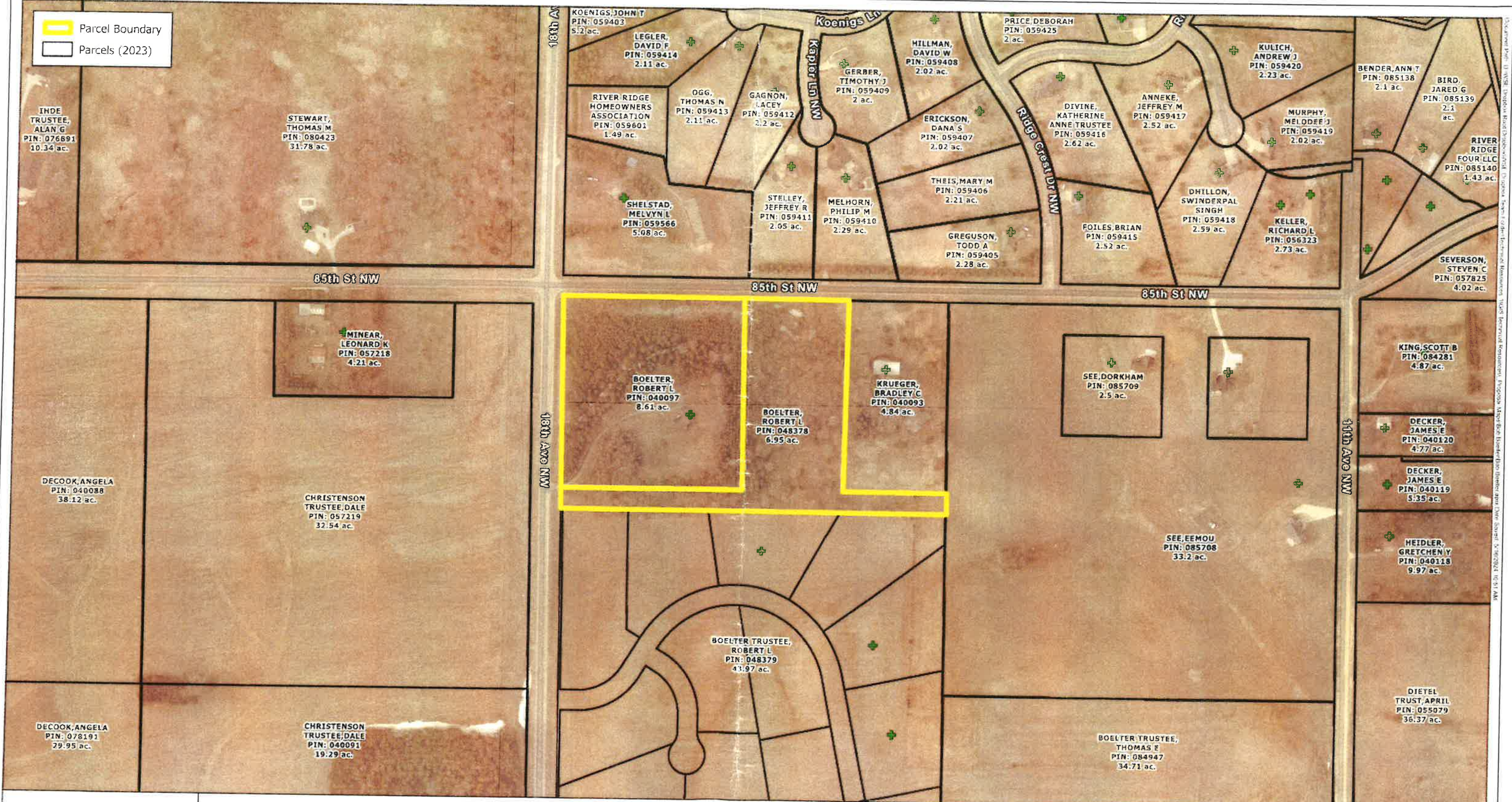


FIGURE 1: Location Map
 Bob Boelter
 Township 108, Range 14
 Oranoco, Minnesota

EXHIBIT A



KASSON OFFICE
 P.O. BOX 100
 33 B VETERANS
 MEMORIAL HIGHWAY
 KASSON, MN 55944

PLAINVIEW OFFICE
 320 WEST BROADWAY
 SUITE 3
 PLAINVIEW, MN 55964

ROCHESTER OFFICE
 1765 RESTORATION
 ROAD SOUTHWEST
 ROCHESTER, MN 55902

Service Layer: Olmsted County, MN GIS Division and Olmsted County, MN
 Property Records and Licensing, Olmsted County, MN, Esri, CIGAR, USGS, Esri,
 TomTom, Garmin, SafeGraph, FOMATI, NASA, USGS, EPA, NPS, USFS,
 Esri, Community Maps Contributors, OpenStreetMap, Microsoft, Esri, TomTom,
 Coordinate System: NAD 1983 HARN, Ad MN Olmsted Feet



0 150 300

1 inch = 300 feet



PARID 843412040097

SECT-34 TWP-108 RANGE-014

9.83 AC

TH PT N1/2 NW1/4 NE1/4 DES AS

FOLL BEG AT NWCOR SD N1/2 TH

NE ALL N LINE OF SDN1/2

990.81FT TO W LINE OF E1/2

NE1/4 NW1/4 NE1/4 TH SE AL W

LINE 662.64FT TO S LINE N1/2

TH SW AL SD S LINE 990.81FT TO

W LINE SD N1/2 TH NW AL SD W

LINE 662.98FT TO PT OF BEG EX

ELY 345FT THEREOF SEC

34-108-14

EXHIBIT B

PARID 843412048378

SECT-34 TWP-108 RANGE-014

7.37 AC

TH PT NW1/4 NE1/4 DES AS FOL

COM AT NWCOR SD NE1/4 TH NELY

AL N LINE SD NE1/4 990.81 FT

TO W LINE E1/2 NE1/4 NW1/4

NE1/4 TH SELY AL SD W LINE

662.64FT TO S LINE SD E1/2 TH

NELY AL SD S LINE 330.27FT TO

E LINE NW1/4 NE1/4 TH SELY AL

SD E LINE 70FT TH SWLY

1321.08FT TO W LINE NE1/4 TH

NWLY AL SD W LIE 732.98FT TO

PT OF BEG LESS NLY 662.98 FT

MORE OR LESS WLY 645.81FT MORE

OF LESS THEREOF SEC 34-108-14

EXHIBIT B